



Cerklje na Gorenjskem



Cerklje na Gorenjskem



Uvod

Cerklje na Gorenjskem so z ugodno lego na prehodu iz Ljubljanske kotline v visokogorski svet Kamniško-Savinjskih Alp na nadmorski višini med 350 in 1972 metri stičišče pestrega naravnega okolja, kulturne krajine in načina življenja tukajšnjih prebivalcev. Vse to je oplemeniteno še z urejenostjo okolja in gostoljubnostjo ljudi, ki tu živijo. Prav umeščenost kraja med slikovita polja, bistre vodotoke in planinske grebene daje izhodišče za to, da Cerklje na Gorenjskem svojo prihodnost prepoznava predvsem v turistični ponudbi tudi za najzahtevnejše obiskovalce.

V Cerkljah sedanost in preteklost hodita z roko v roki. Kulturno bogati kraji s kulinaricnimi posebnostmi in znamenitostmi pripoveduje svojo zgodbo skozi čas, ki so mu svoj pridih dodali še priznani umetniki in arhitekti. Življenjsko zgodbo Cerkelj orisujejo in pripovedujejo po celotni pokrajini tega dela razprostrte cerkve in kužna znamenja, razni drugi kulturni spomeniki, spominske hiše ter tudi spominski park.

Na razmeroma majhnem območju okoli Cerkelj so številne izletniške točke in zanimivosti. Prav gotovo je tu najpomembnejši Krvavec s svojim najenostavnejšim dostopom od vseh slovenskih smučarskih središč in svojo posebno v vseh smereh odprto lego. Pozimi privlači množico smučarjev od vsepovsod, poleti ponuja možnost mnogih pohodov, kolesarjenja ali kar lenobnega sprostitvenega poležavanja na barvitih pašnih pobočjih. Vse poti za pohode in kolesarjenja so jasno označene in varno urejene. V nižinski del se je mogoče spustiti s padalom in pristati na cvetočem travniku.

Poleg cerkva, ki krasijo podobo večine vasi in naselij, si lahko ogledate še druge kulturne znamenitosti: grad Strmol s parkom, nekdanji samostan in cerkev v Adergasu, Hribarjevo vilo, spominski park pomembnih osebnosti in še mnogo drugega.

Po aktivno preživetem dnevu v Cerkljah in njegovi okolici se lahko turist okrepča v eni izmed domačih gostiln in prenoči v številnih prenočiščih in s spoznavanjem kraja z okolico nadaljuje naslednji dan.

Veliko število prenočišč omogoča prijetne počitnice družinam, ljubiteljem narave, športnikom in poslovnim ljudem, ki jih od letališča Brnik loči le 5 minut, od Kranja 15 minut, od Ljubljane kot prestolnice Slovenije pa le 20 minut vožnje z avtomobilom. Opisano dejstvo skupaj z dobro prometno povezavo in zelo slikovito lego kraja zagotavlja, da je turizem najpomembnejša razvojna usmeritev in cilj kraja Cerklje in s tem tudi celotne Občine Cerklje.

Introduction

Cerklje na Gorenjskem is situated on a favourable area where the basin of Ljubljana changes into the high mountains of the Alps named Kamniško-Savinjske Alpe on a level between 350 and 1972 meters above sea. Here is the melting pot of a diverse natural environment, cultural landscape and of the way of life of the inhabitants. All this is enriched with a well-regulated surrounding and a hospitable manner of the people. It is this position within picturesque fields, clear streams and mountain crests which offers a starting point for Cerklje na Gorenjskem to see its future mainly in tourism and in offers for the most pretentious visitor.

In Cerklje past and present go hand in hand. A rich culture is combined with culinary delights and sights which all together tell a story through time and are topped up by renowned artists and architects. The life-story of Cerklje is described and told in the whole region by its vast churches and plague-signs, various cultural sights, memorial houses and memorial parks.

On a comparable small area around Cerklje one finds numerous destinations for trips and interesting sights. Definitely, the most important is Krvavec with the easiest access among all Slovenian ski-centres and especially with its location open in all directions. In winter it attracts many skiers from everywhere, in summer it offers various possibilities ranging from hiking, biking to relaxing in the sun of the colourful pasture slopes. All hiking paths and biking trails are clearly marked and safe. Also it is possible to parachute into the low-land and land on a blooming meadow.

Beside churches, who are adorning most of the images of villages and settlements, visitors can have a look at various cultural sights: the castle of Strmol with its park, a former monastery and the church in Adergas, the Hribar villa, a memorial park of important personalities and many other.

After an active day in Cerklje and its surroundings tourists can refresh themselves in one of the local taverns and spend the night in one of numerous accommodation facilities and continue with their exploration the next day.

A great number of accommodation facilities enable friendly holidays for families, nature-enthusiasts, sport-lovers and businessmen alike, as they are only five minutes by car away from Brnik-airport, 15 minutes away from Kranj and only 20 minutes' drive away from the capital of Slovenia – Ljubljana. The stated facts together with a good transport connection and a picturesque location of the settlement ensure that tourism is the most important development direction, the objective of Cerklje itself and thus of the whole municipality.

Občina
Cerklje na Gorenjskem

Trg Davorina Jenka 13
4207 Cerklje na Gorenjskem
Slovenija

T: +386 (0)4 281-58-00
F: +386 (0)4 281-58-20

E: obcinacerklje@siol.net
W: www.cerklje.si

Cerklje v številkah

Koordinate:
46°15'11.51"N, 14°29'14.84"E
Površina:
79 km²
Povprečna nadmorska višina:
350 - 1972 m
Število prebivalcev:
1.605
Gostota prebivalstva:
20,3 prebivalcev/km²

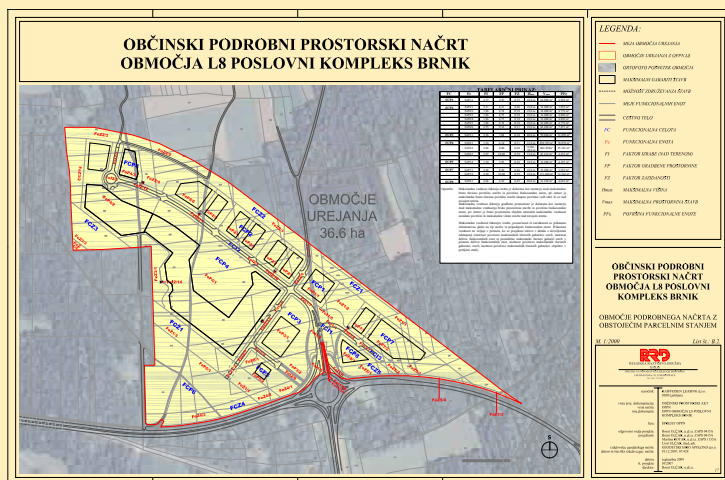
Cerklje in numbers

Coordinates:
46°15'11.51"N, 14°29'14.84"E
Surface:
79 km²
Average height above sea level:
350 - 1972 m
Population:
1.605
Population density:
20,3 inhabitants/km²

Načrtovani / razvojni pristop

Občina sledi konceptu trajnostnega razvoja s trdno in zavestno odločitvijo o spoštovanju načela ravnovesja med težnjo po gospodarskem razvoju ter težnjo po ohranjanju zdravega okolja in narave. S strateškimi razvojnimi načrti in projekti se usklajeno razvijajo vse funkcije centra naselja Cerklje kot občinskega središča na eni strani ter gospodarski potencial mednarodnega letališča Brnik ter Smučarskega centra Krvavec na drugi strani in vse to v smer, ki bo omogočala visoko kakovost življenja današnjim in vsem bodočim generacijam. Pri vsem tem je najpomembnejše največjo pozornost posvetiti nenehni skrbi za okolje in trajnostni rabi naravnih virov ter še posebej v tem delu tudi vse bolj pomembnemu zagotavljanju varstva voda.

Z občinskim prostorskim načrtom je pripravljena podlaga razvoja za prihodnost, že izvedeni in projekti, ki so v izvajanju, so skladni vsem zapisanim usmeritvam. Med zelo pomembne projekte spada izgradnja magistralnega medobčinskega vodovodnega sistema Krvavec s povečanjem zmogljivosti, odvajanje in čiščenje odpadnih voda na celotnem območju občine Cerklje na Gorenjskem s priklopom na centralno čistilno napravo Domžale. Dokončana pa je čistilna naprava Lipce v Češnjevku, na katero je priključenih 950 PE iz petih naselij.



V prihodnost usmerjenih projektov sodi načrtovana izgradnja multi modularnega letališkega mesta Aeropolis na območju Letališča Jožeta Pučnika Ljubljana s poslovno-ekonomskim središčem ter zeleno oazo, namenjeno za golf, nova elektrificirana proga Ljubljana-Kranj-Jesenice z navezavo na letališče Jožeta Pučnika Ljubljana v okviru državnega prostorskega načrta z namenom izboljšanja kakovosti storitev v železniškem prometu ter posodobitev in razširitev smučarskega središča Krvavec.

Zaradi zavedanja pomena prometne dostopnosti kraja občina vsako leto nameni velik del svojih sredstev razširjanju mreže cest in urejanju ter vzdrževanju cestne in druge javne infrastrukture.



V kraju so vsi javni objekti in odprte javne površine urejene tako, da so uporabne za vse starostne skupine, tudi osebam, ki imajo motnje v gibanju in paraplegikom.

Najmlajši populaciji se posveča velika pozornost, zato bodo s pomočjo Evropskega kmetijskega sklada za razvoj podeželja (pristop LEADER) izvedena štiri nova otroška igrišča skladno z vsemi standardi.

Pomemben doprinos k prepoznavnosti kraja Cerklje pomeni izgradnja modernega Nogometnega centra, ki omogoča pripravo vsem domačim klubom, center pa lahko uporabljajo drugi klubi izven tega kraja.

Zavedanje pomena ohranjanja izročila kraja, njegove kulturne in etnološke dediščine so bila izhodišča za obnovo in rekonstrukcijo spomeniško zaščitene profane stavbne dediščine - Petrovčeve hiše, po domače »Pr Petrovc«. Obnova Petrovčeve hiše je bila izvedena s pomočjo evropskih sredstev v okviru Operativnega programa krepitev regionalnih razvojnih potencialov za obdobje 2007-2013, razvojne prioritete »Razvoj regij«, za prednostne usmeritve »Regionalni razvojni programi«.

V bližnji prihodnosti bo v okviru projekta Nature Experience, ki se izvaja v okviru Evropskega teritorialnega sodelovanja SI-AT s pomočjo informativnih tabel in animacijskih vsebin predstavljena opekarstva tradicija na območju ribnika Češnjevki, življenje kačjega pastirja (Veliki studenčar) ter življenje gorskih ptic; posebej bo tudi označena krožna kolesarska pot. Opisano bo delno financirano s strani Evropske unije in sicer Evropskega sklada za regionalni razvoj.

Planned / development approach

The municipality follows the concept of sustainable development with a strong and conscious decision on the respect of a principle of balance between economic development and preservation of a healthy environment and nature. With strategic development plans and projects a balanced development of all functions of the centre of Cerklje as a municipal centre is foreseen as well as the economic potential of the international airport of Brnik and the ski-centre Krvavec is developed. These objectives are set to achieve a high quality of life for today's and future generations. Here the biggest attention is given to a constant preservation of the environment and on a sustainable use of natural resources and especially in this part ensuring safe water resources.

The basis for future development is set within the municipal spatial plan; all implemented projects and projects in implementation are in accordance with the specified objectives. One of the more important projects is the construction of a main inter-municipal water supply system Krvavec of a greater capacity and waste-water treatment on the whole area of the municipality of Cerklje na Gorenjskem with a connection to the central treatment plant in Domžale. The waste-water treatment plant Lipce in Češnjevek with connected 950 PE from five settlements is also finished.

One of the projects which are future oriented is the construction of a modular airport-city Aeropolis on the grounds of the airport Jože Pučnik Ljubljana with a business-centre and a green oasis for golfing, an electrified railway from Ljubljana to Kranj and Jesenice with a connection to the airport Jože Pučnik Ljubljana. This is included in the state spatial plan with the intention to improve the quality of railway services and to modernise and expand the ski-centre Krvavec.



As the awareness of transport connections is evident the municipality allocates a substantial portion of its budget to broaden the road-network and to maintain roads and other public infrastructure.

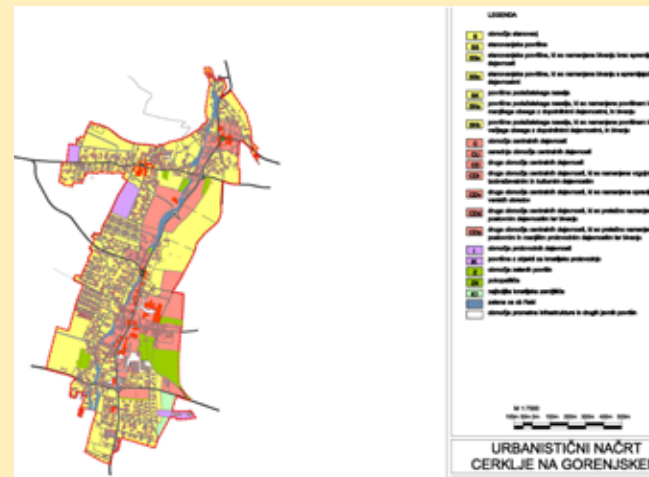
All public objects and open public areas are arranged in a way that they are useful for all ages, also for people with disabilities.

Much attention is given to the youngest population and so with the help of the European Agricultural Fund for Rural Development (LEADER approach) four new playgrounds according to all standards will be constructed.

An important contribution to the recognition of Cerklje is the building of a modern football centre, which enables all home-based clubs a good preparation and it can also be used by clubs from outside.

The awareness of preserving the heritage of the place, its cultural and ethnological heritage was the starting point for the renovation and reconstruction of a secular heritage site – the Petrovc' house, with the field name »Pr Petrovc«. The reconstruction of this house was made with the help of European funds within the Operational plan for strengthening regional development potentials for the period between 2007 and 2013, and here under the development priority »Development of regions« for the priority emphasis »Regional development programs«.

In the near future the project Nature Experience, implemented within the European Territorial Cooperation SI-AT will present the brickyard tradition on the area of the fishpond Češnjevek via info-panels and animated topics and also the life of the dragonfly (Balkan Golden-ringed dragonfly) and the life of mountain birds, as well as a specially marked circular biking trail will be added. The above mentioned will be partly financed by the European Union and its European Regional Development Fund.



Cerklje na Gorenjskem



Okolje

Ozaveščenost in zavedanja pomena varovanja in ohranjanja okolja, v katerem živimo, krajanje spodbuja, da ravnajo odgovorno, saj vsak nepravilno odložen odpadki pomeni onesnaženje okolja. Z vse občane smo uredili sistem ločenega zbiranja odpadkov neposredno na izvoru, v samem kraju kot tudi po celi občini je urejenih tudi veliko števil ekoloških otokov. V letu 2007 je bil zgrajen ZBIRNI CENTER CERKLJE in sicer zaradi še bolj odgovornega ravnanja z okoljem in povečanjem možnosti dodatnega ločevanja in zbiranja odpadkov vseh vrst. Občani lahko svoje odpadke v center oddajo brezplačno. Vse več krajanov se odloča tudi za kompostiranje bioloških odpadkov v lastnih kompostnikih. Vsaj enkrat v letu se v kraju izvede posebna akcija informiranja krajanov o posebnih in nevarnih odpadkih. Ta akcija se izvaja skupaj s Komunalnim podjetjem Kranj, je pa to tudi priložnost izvedbe zbiranja s posebnim mobilnim zbirnim centrom. Odvoz zbranih gospodinskih odpadkov je tedenski. Zelo pohvalno je, da se vsako leto izvede posebna čistilna akcija, kjer poleg krajanov sodelujejo tudi vsi zaposleni v občinski upravi, člani občinskega sveta ter nadzornega odbora. Z velikim veseljem pa se akcije udeležijo tudi vse vaške in pašne skupnosti, gasilci, društva in klubi, šola ter vrtec. Interes za izvedbo te akcije je vsako leto velik in se iz leta v leto povečuje.

V mesecu aprilu je bila za vse občane odprta Energetska svetovalna pisarna za svetovanje in pomoč občanom pri izvajanju ukrepov učinkovite rabe energije. Tak način pomoči občanom pomeni izobraževanje, kar ima za posledico strokovnejši pristop k izboljšanju bivalnih razmer in s tem tudi varovanju okolja, seveda pa tudi zelo pomembno cenejše bivanje v svojem okolju. Energetska pisarna krajanom nudi najširšo paleto informacij o sistemih, kako urediti svoje stavbe, da bi bile le-te manj energetske odvisne – manj potrošne (pravilen način in sistem ogrevanja, zadostna toplotna - izolacijska zaščita, pravilna izbira stavbnega pohištva, pravilna uporaba vseh vrst obnovljivih virov energije). Vse več občanov želi imeti svoje stavbe kot nizko energetske ali celo v standardu pasivne gradnje. Tak pogled ni čutiti le pri urejanju privatnih stavb, taka spoznanja se postavljajo kot zahteve celo pri večstanovanjskih stavbah in stavbah, namenjenih vsem občanom.

V kraju imamo javno vodovodno omrežje s kvalitetno pitno vodo, v kraju pa je tudi centralna čistilna naprava Lipce v Češnjevku. Občani se bolj in bolj zavedajo pomena dobre pitne vode in varovanja le-te in tudi racionalne porabe, zato ima vse več gospodinjstev urejen sistem zbiranja deževnice za potrebe zalivanja vrtov, zelenic in cvetličnih zasaditev. Vse več je tudi primerov, ko očiščeno deževnico uporabijo za potrebe sanitarnega izplakovanja in pranja perila.

Environment

Awareness on the meaning of protecting and preserving our environment encourages the citizens to act responsible, as each rubbish which is not properly treated means pollution. All citizens have at their disposal a source segregated waste separation system, in the settlement itself and on the area of the whole municipality a great number of collection areas (eco-islands) are available. 2007 the COLLECTION CENTRE CERKLJE was built in order to treat our environment even more responsible and to increase the possibilities of additional separation and collection of all kinds of waste. The citizens can dispose of their waste free of charge. More and more people are also deciding to compost biowaste in their own composters. At least once a year a special activity for informing the citizens about special and hazardous waste is carried out. It is organised together with the company for municipal utilities from Kranj and it also offers the collection with a special mobile collection centre. The transport of regular household-waste is carried out once a week. Highly commendable is a special cleaning activity, where next to the citizens also public officials, members of the city council and of the advisory board are collaborating. Also with a lot of joy all village associations and pasture communities, firemen, societies and clubs, the school and kindergarten are joining. The interest for such an activity is high and growing from year to year

In April an Energy-counselling office opened for all citizens in order to advice and helps the people when implementing measures of efficient energy use. This approach to assistance means education for the citizens, as they approach in a more expert way to improve their living conditions and thus protect the environment and it is important to live more cost-efficient in the own environment. The energy office gives to the citizens the broadest possible spectrum of information on systems how to arrange the own house in order to make them less energy dependent – less consuming (proper means of heating and heating systems, adequate thermal insulation, right choice of windows and doors, correct use of all kinds of renewable energy sources). More and more citizens wish to have low-energy or even passive-standard houses. Such a viewpoint can not only be seen when renovating private houses, but also such findings are set as conditions for apartment blocks and buildings intended for the whole community.

The area has a public water-supply system with high-quality drinking water, and also there is the central waste-water treatment plant Lipce in Češnjevku. The citizens are more and more aware of the meaning of good drinking water, protecting this water and also using it rationally. This is why more and more households have a system for collecting rainwater for flowering gardens, green areas and flower arrangements. More and more cases are also using cleaned rainwater for flushing and laundry washing.



Pokrajina

Občina Cerklje na Gorenjskem pokriva 79 km² veliko območje na prehodu Ljubljanske kotline v hribovit svet Kamniški Alp na severu in Tunjiškega gričevja na vzhodu, na nadmorski višini med 350 in 1972 metri. Področje občine se lahko glede na relief razdeli na dva dela. Južni del je ravninski in ima enakomerno razpršeno naselja ter severni del, kjer so hribovi, v pretežnem delu pa gore vse do nadmorske višine 1972 metrov.

Na severnem delu območja, ki je nekoliko dvignjeno nad Ljubljansko kotlino, se zmerno celinsko podnebje že prepleta z gorskim, za katerega so značilna topla, ne prevroča poletja in hladne, ne izjemno mrzle zime. Zaradi prisojne lege in višje nadmorske višine je tu več sončnih ur in dni brez megle, boljši sta tudi dobra vidljivost in kakovost ozračja; blagodejna alpska klima hribovskih vasic omogoča v poletnem času prijeten umik iz ravninskega mestnega vrveža v neokrnjeno naravo. Podeželski videz krajini nižinskega dela dajejo njive, travniki in posebna značilnost - kozolci.

Cerklje na Gorenjskem so z gručastim jedrom ob hudourniškem potoku Reki umaknjene na severni rob Kranjskega polja, pod Krvavec. Kraj se je po cerkvi Marije v trnju prvotno imenoval Trnovlje, z imenom Cerklje pa od leta 1239 dalje. Na njegovem vzhodnem robu raste ob kužnem znamenju iz leta 1645 lipovec z obsegom 5,5 metra. Kraj Cerklje na Gorenjskem ležijo na križišču lokalnih cest z Visokega, Brnika in Komende ter je izhodišče za obisk zimskošportnega središča na Krvavcu.

Pod Krvavcem je več vodnih izvirov in zajetij pitne vode. Manjši potoki, ki izvirajo pod vasmi Ravne, Apno in Šenturška Gora, se iztekajo v potok Doblič, ta pa v Pšato, ki se pred Domžalami izliva v Kamniško Bistrico.

Iz zgornjega dela doline Reke je na Krvavec speljana kabinska žičnica. Že med vožnjo kabinske žičnice se odpirajo razgledi na dolino Kokre, v stene Grintavca, na Karavanke in tudi po Ljubljanski kotlini.

Krvavec je vrh na robu Kališkega pogorja, ki se navezuje na glavno os Kamniško-Savinjskih Alp. Nekdanji ledenik je pobočje Krvavca zaoblil, zato so ljudje posekali redko drevje in ruševje ter okrog vrha ustvarili več planin. Razpoznavno znamenje je stometrski železobetonski stolp, oddajnik RTV Slovenija, ki je konec osemdesetih let nadomestil kovinski stolp, na pobočje postavljen leta 1955. Smučarsko središče na nadmorski višini od 1450 in 1972 metri nudi pozimi več kot 30 km urejenih smučarskih prog, poleti pa je priljubljena točka izletnikom in pohodnikom. Na Krvavcu najdemo številna zdravilna zelišča, hkrati pa je to prebivališče za zaščitene živalske vrste.



Landscape

The municipality Cerklje na Gorenjskem covers an area of 79 km² on the edge from the Ljubljana basin towards the hills of the range Kamniške Alpe on the north and the hills of Tunjice on a level between 350 and 1972 above sea. The area of the municipality can according to relief be divided into two parts. The southern part is more flat and has equally scattered settlements and the northern part with hills and mostly mountains up to 1972 meters above sea.

In the northern part of the area, which is somewhat raised above the Ljubljana basin a moderate continental climate changes into a more mountain climate with warm, but not too hot summers and cold, but not extremely cold winters. Because of a location on the sunny side and a higher altitude here more sunshine hours and days without fog are counted, also here we have better visibility and air quality and the pleasant alpine climate of the mountain villages in summer enables a good retreat from the flat city hustle and bustle into an unspoiled nature. The rural appearance of the region is given by fields, pastures and a special feature – rickstands.



Cerklje na Gorenjskem with its clustered centre at the torrent Reka is drawn back to the northern edge of the field of Kranj, under Krvavec. The name originally was given after the church of Mary in the thorns: Trnovlje and after 1239 onwards it carries the name of Cerklje. On its eastern edge lies next to a plague-sign groves a small-leaf linden with a perimeter of 5.5 km. The settlement of Cerklje na Gorenjskem lies on a crossroad of local streets from Visoko, Brnik and Komenda and they are a starting point for visit the winter-sports centre on Krvavec.



Under Krvavec one can find more water wells and basins of drinking water. Smaller streams which spring under the villages of Ravne, Apno and Šenturška Gora and are flowing into the stream Dolič, this then into the river Pšata, which is joining the river Kamniška Bistrica before Domžale.



From the upper part of the valley Reka a cable car is running. Already, when driving splendid views open above the valley of Krka, into the face of the mountain Grintavec, to Karawanks and also on the Basin of Ljubljana.

Krvavec is a peak on the edge of the mountain range Kališko, which is continuing the main line of the Kamniško-Savinjske alps. A former glacier rounded down the slope of Krvavec, which is the reason why people cut down rare trees and bushes and created many alpine pastures around the peak. A distinctive sign is a tower of one-hundred meters, which is a transmitter of the tv-signal of the Slovenian state television, which was new in the 1980ies and it was used instead of the old metal tower, build in 1955. The ski-centre on a height between 1450 and 1972 meters above sea offers in winter more than 30 km of ski-slopes, and in summer it is a renowned point for hikers and day-tourists. On Krvavec we can also find numerous herbs and at the same time is a life-surrounding for protected animal species.



Odprti zeleni prostori

Cerklje so razpete med ravnino barvitih in slikovitih polj, razgibane hribe in mogočni Krvavec, ki s številnimi lepo urejenimi lokalnimi potmi nudi neskončne možnosti za čudovite sprehode in pohode med cvetočimi travniki spomladi, jeseni pa med gozdovi v tisočerih barvah.



V središču Cerkelj je zgledno in vedno urejen spominski park, posvečen osebnostim, ki so pustile pomemben kulturnozgodovinski pečat kraju. Ta park je lociran neposredno pred šolskim objektom in predstavlja vstopno ploščad v šolske prostore. Učenci in učitelji so se odločili, da bodo park sami vzdrževali in sicer v okviru vzgojno izobraževalnega programa.



Med priljubljenimi izletniškima točkama sta tudi ribnika Lahovče in Češnjevke, ki sta skupaj z gozdom in drugimi vrstami sonaravne vegetacije postala pravi rezervat za različne vrste živali. Sicer pa sta ribnika namenjena gojenju raznih vrst rib in izvajanju ribolova tako za začetnike kot tudi profesionalci. Za red in vzdrževanje skrbi lokalno ribiško društvo. Ribnik Češnjevke je del evropsko pomembnega območja ohranjanja narave – območje Nature 2000. Gozdni potok ob ribniku nudi življenjski prostor velikemu studenčarju, največjemu kačjemu pastirju v Evropi.



V Nogometnem centru Velesovo so na voljo kvalitetno vzdrževane travnate površine za igranje profesionalnega nogometa, igrišče ob šoli z urejeno atletsko progo in košarkarskim igriščem pa je namenjeno tako učencem šole, krajanom ter tudi naključnim obiskovalcem. Za najmlajše je poskrbljeno na urejenih otroških igriščih, ki so grajeni skladno z vsemi predpisi. Okolice šole in vrtcev so zgledno urejene in imajo lepo vzdrževane zelene površine. Kot posebnost šolske okolice je ENO park miru pod geslom »Posadi drevo za zeleni planet«, ki so ga zasnovali otroci sami in ga sami tudi urejajo in vzdržujejo.

Pustolovski Poletni park Krvavec z avanturističnim gibalno-spretnostnim poligonom, trampolini, plezalnim stolpom in kolesarskim parkom ter vožnjo z gorskimi skiroji in karti nudi zabavo za vso družino.

Planinski pašniki in grebeni okrog Krvavca nudijo možnost sprehodov in pohodov, ki ob vsakem trenutku nudijo obilico svežega in čistega zraka in še več lepih pogledov v vseh smereh. Kot na dlani je Ljubljanska kotlina, ki jo obkrožajo hribovja, močna in atraktivna gorska kulisa pa zapira poglede proti severu.

V kraju posebno pozornost posvečajo pokopališču, ki je vedno čisto in zgledno urejeno in kot tako predstavlja tudi mesto srečanja vseh krajanov. Obredna stavba je lepo urejena in omogoča izvedbo tradicionalnega slovesa od umrlega sokrajana.



Open green spaces

Cerklje is situated between the plain of colourful fields, diverse hills and the mighty Krvavec which offers with its numerous nicely arranged local pathways indefinite possibilities for wonderful walks and hiking tours between blooming pastures of thousand colours in spring, and in autumn.

In the centre of Cerklje is an always neatly arranged memorial park dedicated to people who left a special cultural and historical imprint to the town. This park is located directly in front of the school building and it represents the entrance area to the school. The pupils and teachers have decided to maintain the park on their own and this within the educational program.

Among popular trips are also the ponds Lahovče and Češnjevček, which together with forests and other forms of vegetation close to nature have become a true reservoir for different species. The aim of the ponds is to grow various fish species and to perform fishing for beginners as well as for professionals. The local fishers' society takes care of the maintenance. The pond Češnjevček is part of an European protected area – a part of Natura 2000 areas. The forest stream next to the pond offers life-space for the Balkan Golden-ringed dragonfly, which is the biggest dragonfly in Europe.



The football centre Velesovo offers high-quality maintained grass areas for playing professional football, also a playground next to the school together

with a maintained athletics court and a basketball field. All is intended as well as for pupils of the school, also for local people and for visitors also. For the youngest neatly playgrounds are available which were built according to all regulations. The surroundings of schools and kindergartens are neatly arranged and they have maintained green areas around them. One speciality of the school area is the ENO park under the motto »Plant a tree for a green planet«, which was designed by children and they also take care of it.

The Adventure Summer Park Krvavec with its adventure work-out and skill training area, trampolines, climbing tower and a cycling park for driving with mountain scooters and carts offers fun for the whole family.

The alpine pastures and hilltops around Krvavec offer possibilities for walking and hiking and there is a lot of fresh air and splendid views in all directions available at any moment. As a book the basin of Ljubljana opens up from there and it is surrounded by hills; a strong and attractive mountain scenery closes the view towards north.

The place gives special attention to the cemetery, which is always clean and neatly arranged and as such it represents a place where all people meet. The building for memorial services is nicely arranged and it enables to have a traditional farewell of the deceased person.



Cerklje na Gorenjskem



Trajni nasadi

V središču Cerklj je lepo urejen spominski park, na katerega so ponosni vsi občani in je tudi točka, kjer turisti in mimoidoči radi postanejo.

Naslednji trajni nasad, vreden ogleda in daljšega postanka, je parkovna zasa-ditev z vodometom pred nekdanjim ženskim dominikanskim samostanom Velesovo. Ta parkovna zasa-ditev kot prvo poudarja veličastno podobo baročne cerkve, pred katero se nahaja, daje pa tudi svojevrsten pečat vstopa v dolino Graben.

K atraktivnejši in celoviti podobi urejenosti samega kraja znatno prispeva množica smiselno zasajenih vrst dreves iz lokalnega okolja. Drevesom se pridružijo še številne zasa-ditve trajnic, ki skupaj s sezonskimi zasa-ditvami znatno popestrijo glavno prometno žilo, ki poteka skozi kraj.

Tudi v privatnih vrtovih pred in za hišami je videti vse več ozelenitev s tra-jnicami, atraktivnost in modnost pa občani izražajo z ureditvami z uporabo enoletnic, ki so posebnost tega področja ali pa trend tega leta.

Eden izmed redkih na tem območju ohranjenih gradov je grad Strmol z um-etelno zasnovanim jezerom in parkom, z zelo preišljeno umestitvijo ob vznožje Dvorjanskega hriba. Posebnost gradu je njegov lipov drevored. Po vseh zaključenih obnovitvenih delih bo park, ki s svojo parkovno zasnovu izvira iz 17. stoletja, ponujal obiskovalcem atraktiven sprehod po vrhunski zakladnici narave.

Krajani se dobro zavedajo, da vse trajno zelene površine v neposredni bližini kraja in z zelenimi koridorji povezane nekoliko oddaljene trajne zelene površine, pomenijo višjo kvaliteto kraja. V takem kraju pa se lahko dobro odpočiješ, kvalitetno delaš, vsi obiskovalci pa lahko v tako urejenem kraju resnično uživajo.

Permanent planting

In the centre of Cerklje is a nicely arranged memorial park, which is the pride and joy of all people and also a point, where tourists and visitors like to make a stop.

The next permanent planting worthwhile visiting and staying longer is a park planting with a fountain in front of the former Dominican monastery Velesovo. This park planting is firstly emphasising the magnificent image of the baroque church, where it is situated in front of it, and also it gives a special atmosphere when entering the valley named Graben.

An attractive and integrated image of orderliness of the place itself is contributed by a variety of reasonable planting of trees from the local area. Joined with trees are numerous perennial plants, which together with seasonal plantings make a clearly visible distinction of the main traffic axis through the town.

Also private gardens in front or behind houses have more and more green areas with perennials and attractiveness as well as modern trends are shown with seasonal plantings, which are either a speciality of the area or a trend in a specific year.

One of the rare preserved castles in the area is Strmol castle with an elaborate design of the lake and park and sophisticatedly embedded on the foot of the Dvorjanski hill. A speciality of the castle is its linden avenue. After all reconstruction works are finished the park, which dates back in its construction to the 17th century, will offer to the visitors an attractive stroll through a rare treasure of nature.

The local people are very much aware, that all permanent green areas in the near vicinity of the town and some more areas which are more distant but connected with green corridors also mean a higher quality for the place. Here people are able to rest, work qualitative and all visitors are able to really enjoy in such a nicely arranged place.



Cerklje na Gorenjskem



Sezonski nasadi

Ljubezen do življenja z naravo je opaziti povsod – polja so skrbno obdelana, urejene so lokalne ceste in vaške poti, negovane so zelene površine, lepo urejeni so objekti, vrtovi, obnovljeni sakralni spomeniki...

Od pomladi dalje se pestri podobi pokrajine okoli Cerklj poleg običajnega zelenja pridružijo še cvetoči travniki in polja ter tudi posebej lepo ocvetličena domača okolja in okolja poslovnih ter turističnih objektov in vseh javnih površin.

Še posebno veliko prostega časa in tudi skrbne pozornosti občani posvečajo svojemu privatnemu vrtu tudi s poudarkom na zelenjavnem delu vrta, ki je bolj in bolj pomemben v samooskrbi prebivalstva z nekaterimi vrstami živil.

Vsi zaposleni v občinski upravi skupaj z županom se trudijo spodbuditi spoštljiv in odgovoren odnos do okolja, spoštovanja svoje tradicije, da našim naslednikom prepustijo okolje v boljšem stanju kot so ga dobili.

V ta namen kraj Cerklje vsako leto izvede lokalno tekmovanje v urejenosti kraja Cerklje, okoliških vasi in naselij ter urejenosti posameznih hiš z njihovimi posameznimi deli (najlepše urejeno balkonsko cvetje...). Poseben poudarek tega tekmovanja, kar vedno rad poudarja gospod župan, je prebuditi zavest za urejenost in ohranjanje tradicije tudi na področju rastlinja, ki je značilna za to krajino. Podelitev priznanj trem najboljšim iz vsake kategorije se izvede na že tradicionalni vsakoletni prireditvi, ki je množično obiskana.



Seasonal planting

Love towards living in line with nature can be seen everywhere – the fields are tilled, local roads and village trails are in good condition, green areas are cultivated, objects, gardens are nicely maintained, sacral monuments are renovated...

From spring onwards the diverse countryside around Cerklje receives next to the ordinary green also blooming pastures and fields and nicely blooming surroundings of homes, business and tourism objects and of public places.

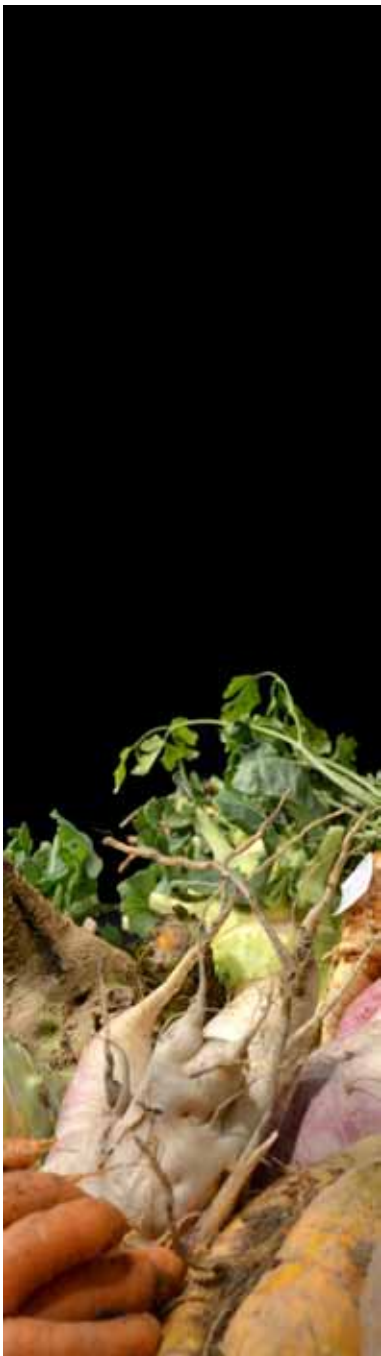
A big portion of their free time and caring attention is given to the private garden where the local people give a special emphasis on the vegetable part, which is more and more important in the self-sufficiency of the people with some food.

All employed in the municipal administration together with the mayor wish to encourage a respectful and responsible relationship towards environment, respect for tradition in order to pass on their environment to the next generations in a better condition as they received it.

For this purpose Cerklje each year organises a local competition in arrangement of the town of Cerklje, of the neighbouring villages and settlements and in arrangement of streets and individual houses with their individual parts (the nicest arrangement of balcony flowers ...). A special emphasis of this competition is to raise awareness for orderliness and the preservation of tradition also within the plantings typical for the area, are the words always emphasised by the mayor. The results and prizes for the best three in each category are presented at an already traditional annual event with numerous visitors.



Cerklje na Gorenjskem



Okoljevarstveno izobraževanje

Environmental education

Osnovna šola Davorina Jenka Cerklje, podružnična šola Zalog ter vrtca Murenčki in Zalog s svojimi vzgojno izobraževalnimi programi posvečajo veliko pozornost okoljevarstvenim vsebinam.

Eden izmed razvojnih ciljev šole Davorina Jenka Cerklje je trajnostni razvoj. Učenci se v vzgojno – izobraževalnem procesu vključujejo v različne okoljevarstvene projekte, aktivno sodelujejo pri očiščevalnih akcijah, tedensko očistijo okolico svoje šole, krepijo empatijo do sočloveka z zbiranjem plastičnih zamaškov in odpadnega papirja. Z vključevanjem šole v mrežo ENO šol (*environment online* – globalno virtualna spletna mreža šol za trajnostni razvoj) se na otroke prenaša znanje, da je narava neprecenljivi dar, otroke z vsega sveta pa združuje v skupni skrbi za okolje in njegovo problematiko. Otroci hkrati aktivno izvajajo različne akcije v lokalnem okolju, kot so zasaditve dreves, zbiranje zaobljub žabcu Franciju za zmanjšanje klimatskih sprememb, spodbujajo širšo lokalno skupnost k zmanjševanju uporabe plastičnih vrečk, varčni uporabi energije. Otroško delo je tudi zasnova in izvedba ENO parka miru pod geslom »Posadi drevo za zeleni planet.« Šola se povezuje tudi globalno; v Maleziji je tako posvojila 1000 dreves. Kot ENO šola so se pridružili tudi umetniškemu projektu 150 držav sveta v pisanju nadaljevanja zgodbe Kapljice življenja, finskega avtorja Esko-PEkka TiiTinE-na. Kar nekaj učencev je sodelovalo z zgodbicami, ki se dotikajo ekologije, sajenja dreves, onesnaženja narave, sodelovalnega dela med generacijami ljudi in živali. Šola je zaradi okoljevarstvenih aktivnosti dobitnik priznanja »Planetu zemlja prijazna šola«.



Preko izobraževalnih delavnic za vse generacije na temo okolja in uporabe obnovljivih virov energija se uspešno širi poznavanje problematike ohranjanja okolja. Učinek tovrstnih izobraževanj, delavnic in predstavitev se jasno kaže v zmanjšanem številu divjih odlagališč, v urejenem zbiranju in ločevanju odpadkov ter v povečanem zanimanju za ekološko vrtnarjenje brez uporabe pesticidov.

The Elementary school Davorin Jenko in Cerklje, the subsidiary school Zalog and the kindergartens Murenčki and Zalog with their educational programs give special emphasis to topics within environment protection.

One of the development goals of the school Davorin Jenko Cerklje is sustainable development. Within the educational process the pupils are working within various environmental projects, they are actively involved in cleaning actions, they clean their school premises on a weekly basis, and they encourage empathic behaviour towards other humans by collecting plastic corks and used paper. The school is part of the school network of ENO-schools (environment online – a global virtual web-network of schools for sustainable development) and is passing over to the children knowledge that nature is a priceless gift and that children from all over the world are combined in their common concern for the environment and its problems. At the same time children are involved in active projects within their local surrounding, as are plantings of trees, collecting promises for Franc – the frog for mitigation of climate change, they encourage a broader local community to reduce the use of plastic bags, to use energy more efficient. The work of children is also shown in the ENO-park of peace under the motto »Plant a tree for a green planet« The school also has global connections, as they have adopted 1000 trees in Malaysia. As an ENO-school they have also joined an art project from 150 countries in writing a continuation of the story Drops of life, of the Finnish author Esko-PEkka TiiTinE-na. Quite a few students have sent stories, which are dealing with ecology, plantings of trees, pollution, cooperative work between generations of people and animals. For their environmental protection activities the school won the prize »Planet Earth friendly school«.



Via educational workshops for all generations on the topic of environment and the use of renewable knowledge about the protection of nature is successfully spreading. The effect of such educational units, workshops and presentations is clearly shown in the reduced number of wild dump-sites, in an arranged collection and separation of waste and in the increased interest for eco-gardening without the use of pesticides.



Cerklje na Gorenjskem



Trud in udeležnost

Cerklje v letošnjem letu prvič sodelujejo na evropskem tekmovanju v urejenosti krajev Entente Florale Evrope na pobudo slovenskega društva Entente Florale Slovenija.

V zadnjih devetih letih kraj redno sodeluje na tekmovanju v urejenosti v okviru slovenskega državnega projekta »Moja dežela – lepa in gostoljubna«.

Občani Cerklj se vseskozi trudijo za zgledno in strokovno pravilno urejenost svojega kraja s širšo okolico. To dejstvo dokazuje večkratni naziv najlepšega manjšega mesta v Sloveniji. Vsa podeljena priznanja so odraz skupnega sodelovanja lokalne skupnosti in vseh občanov pri urejanju kraja Cerklje, okoliških vasi in zaselkov ter posameznih objektov.

V vse slovensko očiščevalno akcijo »Očistimo Slovenijo v enem dnevu« se vsakoletno množično vključujejo vsi občani, šole, vrtci kot tudi vsa lokalna društva in organizacije. V tem dnevu se združijo moči, da se odstrani kar največ v naše okolje napačno odloženih odpadkov in to z namenom, da ustvarimo še lepše in varnejše okolje, v katerem živimo.

Effort and involvement

In this year Cerklje is competing for the first time in the European competition for the arrangement of towns and villages Entente Florale Europe at the initiative of the Slovenian association Entente Florale Slovenia.

In the past nine years our place is regularly competing in the arrangement of our place within the national project »My country – beautiful and hospitable«.



The people of Cerklje are always striving for an exemplary and correct arrangement of our town with its broader vicinity. This is proven at many occasions and also when we were awarded the title of the most beautiful small town in Slovenia. All prizes are reflecting our joint cooperation within the local community and of all townspeople when arranging our town Cerklje, the surrounding villages, parts and individual objects.

Each year all citizens, schools, kindergartens and all local associations and organisations participate at the national Slovenian cleaning action »Lets clean up Slovenia in one day«. During this day the powers are combined to clean as much as possible waste which was not disposed of properly and this with the aim to create an even nicer and safer environment for living.

The prestigious European competition in the arrangement of towns and villages Entente Florale Europe and this year's contribution from Cerklje is clearly presented to a broader public. Information on the competition can be found on the following webpages www.cerklje.si and www.tic-cerklje.si, in the local newspapers, on local radio stations and television with the aim to show that the local community, associations, organisations, the school and kindergartens are together creating a quality environment, where it is a privilege to live and work.



Prestižno evropsko tekmovanje v urejenosti krajev Entente Florale Evropa in letošnje vključenosti Cerklj v to tekmovanje je jasno predstavljeno široki javnosti. Informacijo o tekmovanju lahko najdemo na spletnih straneh www.cerklje.si in www.tic-cerklje.si, v lokalnem časopisju, na lokalnem radiu in televiziji z namenom, da lokalna skupnost, društva, organizacije, šola in vrtca skupaj soustvarijo kvalitetno okolje, v katerem je privilegij živeti in delati.



Turizem in prosti čas



Turizem predstavlja temeljni usmeritveni razvojni načrt občine z namenom oblikovanja destinacije tudi za najbolj zahtevnega gosta. Da bo še tako zahtevni gost zadovoljen, zagotavlja raznolika gostinska ponudba in namestitvev v kraju in širši okolici, neokrnjena narava, ohranjena kulturna dediščina, številne pohodne in kolesarske poti, možnost zimskih športov, jahanje in padalstvo. Odprtje Družinskega adrenalinskega parka Krvavec ter tradicionalne kulturne in športne prireditve še posebej bogatijo turistično ponudbo in s tem podoba kraja samega.

Občine Cerklje na Gorenjskem precej svojih proračunskih sredstev namenja za promocijo destinacije na različnih sejmih tako doma kot v tujini. V preteklem letu se je občina vključila tudi v Regionalno destinacijsko organizacijo Gorenjske, z namenom še celovitejšega in kvalitetnejšega predstavljanja vsem, ki bi želeli obiskati Cerklje z ožjo in širšo okolico.

Poznano je, da se po markiranih poteh lahko povzpneš na Štefanjo ali Šenturško goro, Ambrož ali na vrh Krvavca, da je mogoče kolesariti po označenih nižinskih in gorskih kolesarskih poteh, da konfiguracija okolice omogoča spuščanje s padali na mnogih mestih. S sprehodi po ravninskem delu okoli Cerklj pa se vidi krajinska slika z mogočnostjo hribovito – goratega zaledja tega kraja.

Z vseh vrhov okolice kraja se odpirajo čudoviti pogledi, tako na Ljubljansko kotlino, Karavanško gorsko verigo, Kamniško-savinjske Alpe, mogoče je videti tudi Julijske alpe s Triglavom. V neposredni bližini lahko enostavno doživite visokogorsko izkušnjo na 1000 metri višine s pohodom iz Adergasa čez Štefanjo goro in Davovec do Doma na Gospinci.

V zimskem času so pobočja Krvavca vabljiva z več kot 30 kilometri stalno urejenih smučarskih prog in posebnim sankoškim poligonom. Sicer

smučarski center Krvavec slovi kot najlažje dostopno in tudi najlepše urejeno slovensko smučarsko središče. Pomlad in poletje ter tudi jesensko obdobje na Krvavcu so nekaj posebnega ob dejstvu, da so vsa pobočja prostrani pašniki in del teh je tudi Poletni park Krvavec. Krvavška pobočja nudijo možnosti pohodov, vožnje s kolesi, nabiranje zdravilnih zelišč in možnost sprostitve za vse generacije, ki so željne miru in tišine, obilico svežega zraka in čudovitih pogledov in razgledov.



Skozi celotno leto se v kraju in njegovi okolici odvijajo številne tradicionalne kulturne in športne prireditve. Tudi v tem letu bo v kraju organizirana že 23. tradicionalna prireditev »A prideš...na naj pridelek«, na kateri se bodo v zabavnem tekmovalnem izboru pomerili v desetih kategorijah najtežji, največji, najdaljši kmetijski pridelki.

V Cerkljah je zelo dejaven in zelo lepo urejen Turistično informativni center Cerklje (TIC), ki je bil ustanovljen v letu 2010. V njem lahko obiskovalci dobijo vse potrebne informacije za sam kraj in njegovo ožjo in širšo okolico. Vse te informacije in informacijski material je obiskovalcem na voljo brezplačno; brezplačna pa je tudi uporaba E koticčka.



Tourism and leisure



Tourism represents a basic direction in the development plan of the municipality with the aim to design our destination even for the most demanding guest. In order to satisfy even a demanding guest we offer diverse catering and accommodation in our town and surroundings. Also there is unspoiled nature, preserved cultural heritage, numerous hiking paths and biking trails, winter sports, horse-back riding and parachuting. The opening of the Family Adrenaline park Krvavec and traditional cultural and sports events are additionally making our tourism offer more diverse and with it our image.

The municipality of Cerklje na Gorenjskem is using a considerable part of its budget for the promotion of our destination at various fairs in Slovenia and abroad. In the past year our municipality also joined the Regional destination organisation of our region Upper Carniola with the aim to present ourselves even more integrated and qualitative to all, who would wish to visit Cerklje with its near and broad surroundings.

It is very well known that via marked paths one can climb the hill of Štefanija or Šenturška gora, Ambrož or to the top of Krvavec, also it is known that it is possible to cycle on marked trails in the lowlands and in the mountains and that the configuration of the environment enables parachuting on many spots. When walking in the flat part around Cerklje we can see the landscape with its magnificent hilly and mountain backbone.

There are splendid views from all mountaintops, as well as on the basin of Ljubljana, the mountain range Karawanks, the alps Kamniško-savinjske Alpe, also it is possible to see the Julian Alpa with the highest peak of Slovenia – Triglav. In the near vicinity it is easy to experience more mountains at 1000 meters above sea when hiking from Adergas over Štefanja gora and Davovec towards the cottage on Gospinca.

During winter the slopes of Krvavec invite with more than 30 kilometres of ski-slopes and a special bob trail. The ski-centre Krvavec is renowned for its easy access and as the most beautiful arranged ski-area in Slovenia. Spring, summer and autumn are on Krvavec truly special as all slopes are vast pastures and part of it is also the Summer camp Krvavec. The slopes offer hiking paths, cycling, collecting herbs and possibilities for all generations to relax in a peaceful and quiet surrounding, also a lot of fresh air and splendid views are there.



The whole year in the town and its surroundings numerous traditional cultural and sport events are taking place. Also in this year the traditional and already 23rd event »Will you come ... to the best crop«, where during a funny competition in ten categories the heaviest, biggest, longest agricultural crop will be awarded.

Cerklje also has an active and nicely arranged Tourism-information centre Cerklje (TIC), which was established in 2010. Here visitors can receive all necessary information on the place and its nearer and broader surroundings. All information and information material is available for the visitors for free, also the use of an E-corner is free.



I FEEL
SLOVENIA



www.cerklje.si

Predstavitev

Občina Cerklje na Gorenjskem je del gorenjske regije, imenovana Gorenjska, ki leži na severozahodnem delu Slovenije. Na severu poteka meja po Karavankah s sosednjo Avstrijo (dežela Koroška), na zahodu z Italijo (dežela Furlanija Julijska krajina) in Goriško razvojno regijo, na vzhodu s Savinjsko, na jugu pa se odpira proti Osrednjeslovenski regiji.



V listinah se Cerklje prvič omenjajo sredi 12. stoletja kot Trnovlje, s sedanjim imenom pa po letu 1239.

Leta 2004 je kraj praznoval 850-letnico prve pisne omembe središča Cerklj, kjer še danes stoji Marijina cerkev. Arheološka najdišča v Šmartnem in na Krvavcu pa pričajo o zgodovini naseljenosti tega območja že v antiki. Cerklje so danes pomembno vozlišče poti, ki vodijo skozi vasi pod gorskim obodom in po pobočjih Krvavca.

Občina Cerklje na Gorenjskem je lokalna skupnost z jasno začrtanimi razvojnimi smernicami. Pri svoji rasti in razvoju se opira na svoje ključne prednosti v naravnem in kulturnozgodovinskem bogastvu krajev, prometni dostopnosti in v ljudeh, ki se vse danosti zavedajo in imajo jasno izoblikovano in strokovno podprto vizijo razvoja svojega kraja.

Tvorno sodelovanje lokalne skupnosti, društev in različnih strokovnjakov omogoča kraju uresničevati razvoj za prihodnost s poudarkom na ohranjanju identitete kraja, varovanju okolja ter dvigu kvalitete življenja v kraju. Uresničevanje zastavljenih ciljev je mogoče le s podporo celotne skupnosti, zato se različne ideje in vizije ter pripravljene načrte razvoja kraja vselej podrobno predstavijo na občinskem portalu www.cerklje.si. O vsem nameravanem se izvajajo redne tiskovne konference, javne predstavitve tako v lokalnem in regionalnem časopisju kot tudi na radijskih in televizijskih postajah, ki pokrivajo Cerklje s širšo okolico.

Presentation

The municipality of Cerklje na Gorenjskem is part of the region Upper Carniolia, situated in the north-western part of Slovenia. To the north flows the border towards neighbouring Austria on the mountain range of the Karawanks (region Carinthia), to the west is the border towards Italy (region Friuli Venezia Giulia) and towards the development region of Gorizia, to the east with the region Savinjska and to the south it opens up towards the central region of Slovenia.

Cerklje was mentioned for the first time in the middle of the 12th century under the name Trnovlje, with the present name it was mentioned after the year 1239.

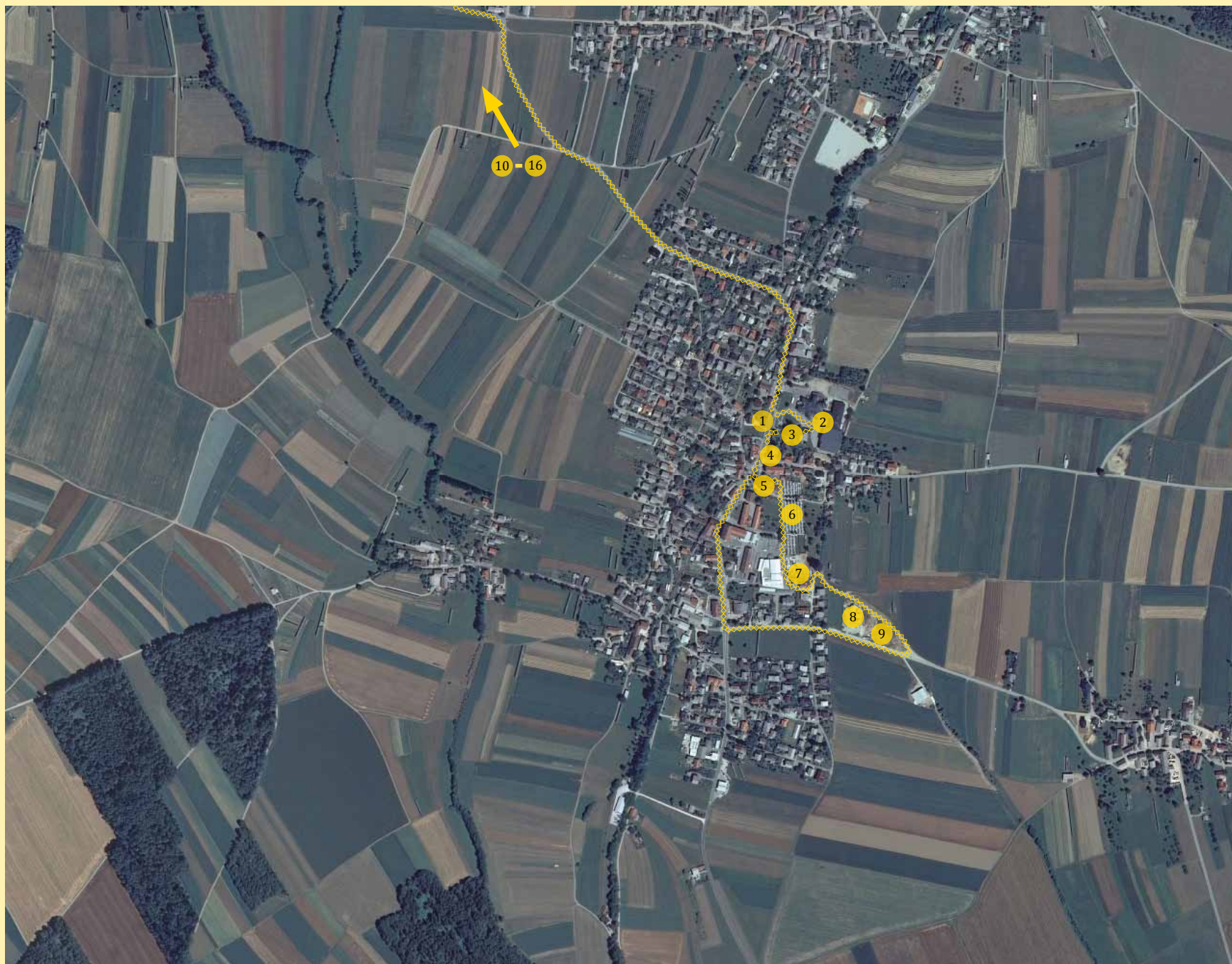
2004 the settlement celebrated the 850-jubilee of the first mentioning of the centre of Cerklje, where today we still find the parish church of Mary. Archaeological findings in Šmartno and on the Krvavec witness that this area was settled already in the Antique. Today Cerklje is an important junction which covers three villages under the mountain range and on the slopes of the Krvavec.

The municipality of Cerklje na Gorenjskem is a local community with clearly set development guidelines. With its growth and development it leans on key advantages in natural and cultural-historical richness of places, approach to transport and in people, who are aware of these distinctive features and have a clearly formed vision for development of the town based on expert knowledge.

A creative co-operation of the local community, associations and various experts enables the settlement to accomplish a development for future with an emphasis on preserving the identity of the town, protecting the environment and raising the quality of life within. Accomplishing the set goals is only possible with the support of the complete community. Thus, different ideas, visions and prepared development plans for the place are always presented on the municipal portal at www.cerklje.si. All intentions are regularly presented on press conferences, public presentations on the local as well as on a regional level and also on radio and television stations which are broadcasting on the area of Cerklje.



Pot obiska kraja / Points of interest



- 1 Petrovčeva domačija
- 2 Osnovna šola, vrtec, kulturni center, športna dvorana
- 3 Spominski park
- 4 Hribarjeva vila
- 5 Cerkev
- 6 Pokopališče
- 7 Večstanovanjski blok
- 8 Gasilski dom
- 9 Zbirni center
- 10 Grad Strmol
- 11 Ribnik Češnjevек
- 12 Kmetija Pr' Vrhovnik
- 13 Samostan Velesovo
- 14 Kmetija Pr'Mrkc
- 15 NC Velesovo
- 16 Panoramski pogled iz Raven

- 1 Petrovc's house
- 2 Elementary School, Kindergarten, Cultural centre, Sport Hall
- 3 Memorial park
- 4 Hribar Villa
- 5 Church
- 6 Cemetery
- 7 Multi-apartment block
- 8 Fire station
- 9 Collection center
- 10 Castle Strmol
- 11 Pond Češnjevек
- 12 Farm Pr' Vrhovnik
- 13 Monastery Velesovo
- 14 Farm Pr'Mrkc
- 15 Football Centre Velesovo
- 16 Panoramic view from Ravne



Dobrodošli v ...

Welcome to ...



Izdal in založil **Publisher**: Občina Cerklje na Gorenjskem *Municipality of Cerklje na Gorenjskem*

Besedilo **Text**: Simona Vodlan

Lektoriranje **Lectorship**: Alojzija Schlaus

Prevod **English translation**: Tomaž Dietinger

Fotografije **Photos and visual material**: Arhiv Občine Cerklje na Gorenjskem, Janko Dermastja, Matic Zorman, Janez Kuhar, STO, RTC Krvavec
Archive Municipality of Cerklje na Gorenjskem, Janko Dermastja, Matic Zorman, Janez Kuhar, STO, RTC Krvavec

Grafično oblikovanje **Graphic design and layout**: Martina Schlaus

Tisk **Printing**: Tiskarna Dikplast, d.o.o., Celje

Slovenske Konjice, 2012